

DIXIE

F F Δ F7 B \flat G7 C7 F **A** F F Δ F7 B \flat

I CAME FROM AL - A - BAM-AH WID MY

F G7 C F F Δ F7 B \flat Dm Dm7 G7 C7 F

BAN-TO ON MY KNEE I'M G'WAN TO LOU-SI - AN - A MY TRUE LOVE FOR TO SEE. IT

F F Δ F7 B \flat F G7 C F F Δ F7 B \flat

RAINED ALL NIGHT THE DAY I LEFT, THE WEA-THER IT WAS DRY THE SUN SO HOT I FROZE TO DEATH, SU

Dm Dm7 G7 C7 F **MEN** B \flat **ALL** C/B \flat F/A G7

SAN - NA DON'T YOU CRY! OH OH OH OH! SU - SAN - NA, OH DON'T YOU CRY FOR

C F F Δ F7 B \flat G7 C7 F F7

ME, I'VE COME FROM AL - A - BAM - A, WID MY BAN - TO ON MY KNEE

B B \flat **MEN** **ALL** B \flat $^{\circ}$ F7

YOU CAN BRING PEARL, SHE'S A DARN NICE GIRL, BUT DON'T BRING LU - LU!

MEN **ALL** B \flat E \flat

YOU CAN BRING ROSE WITH THE TURNED-UP NOSE, BUT DON'T BRING LU - LU! LU - LU AL-WAYS

E \flat m B \flat Gm7 C7 C $^{\circ}$

WANTS TO DO WHAT THE BOYS DON'T WANT HER TO, EV - 'RY TIME SHE STARTS A-ROUND,

C7 F7 B \flat **GIRLS** **ALL** B \flat $^{\circ}$

LON-DON BRIDGE IS FAL-LING DOWN! YOU CAN BRING CAKES OR FIL-LETS OF STEAK BUT DON'T BRING

F7 GIRLS **Cm Eb7 D7**

LU - LU! LU-LU GETS BLUE AND SHE GOES 'CUCK-OO' LIKE THE CLOCK UP - ON THE SHELF

Eb ALL **Ebm** **Bb** **G9** **F9**

SHE'S THE KIND OF SMAR - TY WHO BREAKS UP EV - 'RY PAR - TY

Bb **C7** **Bb** **F7** **Bb** **G7**

HULL - A - BA - LOO - LOO, DON'T BRING LU - LU, SHE'LL COME BY HER - SELF!

C GIRLS **D7** **G7** **G+7** **CΔ**

MA. HE'S MA-KING EYES AT ME! MA. HE'S AW-FUL NICE TO ME!

C **Eb°** **G7**

MA HE'S AL - MOST BREA-KING MY HEART, I'M BE - SIDE HIM,

C **Eb°** **G7** **C** **D7**

MER-CY! LET HIS CONS-CIENCE DE HIM! MA. HE WANTS TO MA - RRY ME,

G7 **Dm7** **G7** **G+7** **E7** **A7** **D9** **G7** **C** **Eb°** **G7** **C** **Eb°**

BE MY HO - NEY SEE. E-V'RY MI-NUTE HE GETS BOL-DER, NOW HE'S LEA-NING

G7 **E7** **Am7** **D7** **G7** **C** **Bb7**

ON MY SHOUL-DER, MA. HE'S KIS-SING ME!

D MEN **E°** **Bb7** **F7/C Bb7**

YES SIR, THAT'S MY BA-BY NO SIR, DON'T BE MAY-BE YES SIR, THAT'S MY BA - BY

Eb GIRLS **Eb** MEN **E°** **Bb7**

NOW VO-DO-DE-OH! YES MA'AM, WE'VE DE - CI-DED NO MA'AM, WE WON'T HIDE IT

F7/C Bb7 Eb

B7 Bb13 Eb7

GIRLS

GIRLS

MEN



YES MA'AM, THAT'S MY BA - BY NOW VO - DE - OH DO! BY THE WAY, (BY THE WAY) BY THE

Ab7

Cm7

F7

Bb7

ALL

GEORGE



WAY (YES BY THE WAY) WHEN WE MEET THAT PREA - CHER I'LL SAY WHAT WILL YOU

GIRLS

Eb

Eo

Bb7

RALL. . . .



SAY?

WE'LL SAY THAT YES SIR, THAT'S MY BA - BY NO SIR, DON'T BE MAY - BE YES SIR,

MEN

F7/C Bb7 Eb

G7

E C

TWO GIRLS

D7



THAT'S MY BA - BY NOW

BEAU - TI - FUL DREA - MER, WAKE UN - TO ME,

G7

C



STAR - LIGHT AND DEWD - ROPS ARE WAIT - ING FOR THEE; SOUNDS OF THE RUDE WORLD,

D7

G7

C

G7

ALL



HEARD IN THE DAY, LULL'D BY THE MOON - LIGHT HAVE ALL PASS'D A - WAY! BEAU - TI - FUL DREA - MER,

C

D7

G7

C

TWO GIRLS



AL - WAYS IN SONG, LIST WHILE I WOO THEE WITH SOFT ME - LO - DY;

GONE ARE THE CARES OF

D7

G

C



LIFE'S BU - SY THROUG, BEAU - TI - FUL DREA - MER, A - WAKE UN - TO ME!

F

RALL...

C

G7

F C TEMPO ALL

CΔ

C6

C#o



BEAU - TI FUL DREA - MER, A - WAKE UN TO NOTH - ING COULD BE FIN - ER THAN TO BE IN CAR - O - LIN - A IN THE ME

G⁷ D_m D_m^Δ D_m⁷ G⁷

MORN - ING, NO-ONE COULD BE SWEET-ER THAN MY SWEET-IE WHEN I MEET HER IN THE

D^{♯0} C F C F A⁷

MORN - ING. WHERE THE MORN - ING GLOR-IES TWINE A-ROUND THE DOOR,

D⁷ G D_m⁶ E⁷ A_m D⁷ G⁷

WHISP-ER - ING PRET - TY STO - RIES I LONG TO HEAR_ ONCE MORE.

C C^{♯0}

STROL - LING WITH MY GIRL - IE WHERE THE DEW IS PEAR - LY EAR - LY IN THE

G⁷ D_m D_m^Δ

MORN - - - ING, BUT - TER-FLIES ALL FLUT - TER UP AND

D_m⁷ G⁷ F^{♯0} G⁷

KISS EACH LIT - TLE BUT - TER-CUP AT DAWN - - - ING, OH

C C⁷ F D⁷ D⁷(b₉) G⁷

IF I HAD A-LAD-DIN'S LAMP FOR ON-LY A DAY, I'D MAKE A WISH AND HERE'S WHAT I'D SAY:..

C A_m C A⁷ D⁷ D⁷(b₉) G⁷ C G⁷

NOTH-ING COULD BE FIN-ER THAN TO BE IN CAR - O-LIN-A IN THE MORN - ING.

G⁷ C C⁺/E F G⁷ D_m⁷/A B^{♭0} G⁷ F/C C

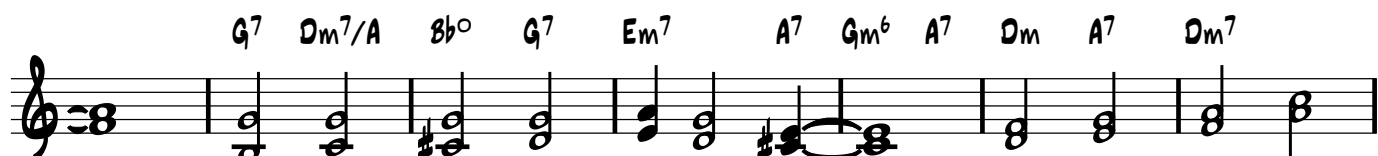
CAL - I - FOR - NIA HERE I COME, RIGHT BACK WHERE I START-ED FROM.



WHERE BOW-ERS OF FLOW-ERS BLOOM IN THE SUN. EACH MORN-ING



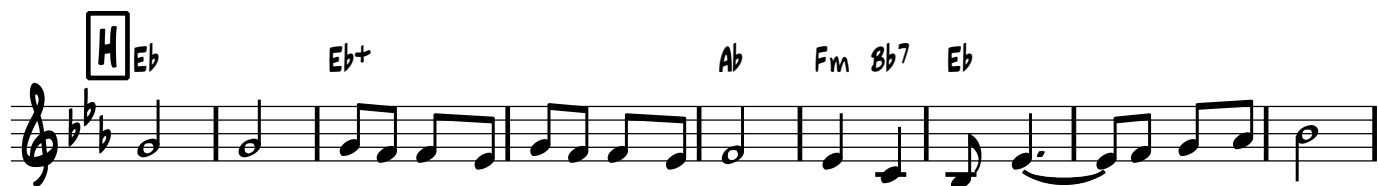
AT DAWN-ING, BIRD-IES SING AND EV-'RY-THING, A SUN - KIST MISS SAID, "DON'T BE LATE."



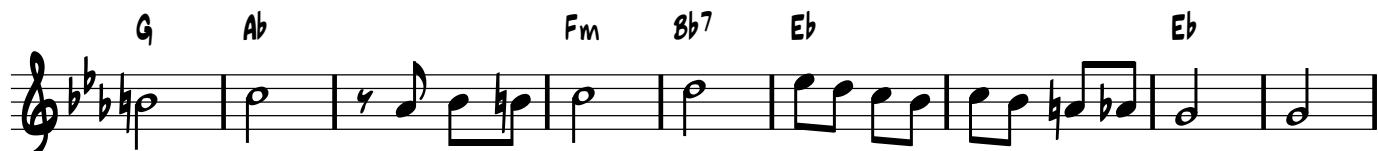
THAT'S WHY I CAN HARD-LY WAIT. OP - EN UP THAT



GOL-DEN GATE. CAL - I - FOR - NIA HERE I COME.



SWAN - EE - HOW I LOVE YOU HOW I LOVE YOU MY DEAR OLD SWAN-EE I'D GIVE THE WORLD



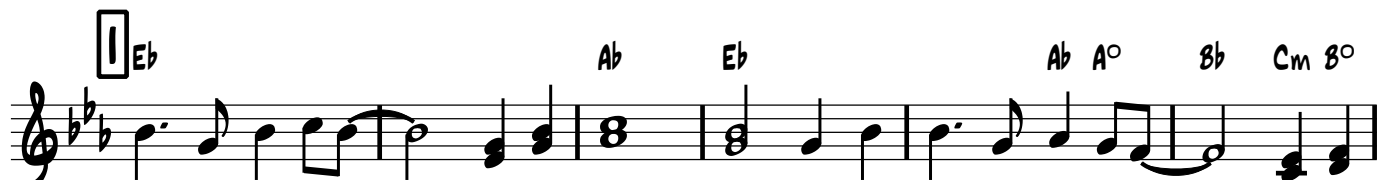
TO BE A-MONG THE FOLKS IN D. I X I E VEN NOW MY MAM - MYS



WAIT-ING FOR ME PRAY-ING FOR ME DOWN BY THE SWAN-EE THE FOLKS UP NORTH



WILL SEE ME NO MORE WHEN I GO TO THE SWAN-EE SHORE MI-CHAEL



ROW THE BOAT A - SHORE HAL-LE - LU - JA! MI-CHAEL ROW THE BOAT A - SHORE, HAL-LE-

Eb/Bb Bb7 Eb **GIRLS SPLIT** Eb Ab Eb **ALL**

LU - - JA! SIS - TER HELP TO TRIM THE SAIL, HAL - LE -

Ab Eb **GIRLS SPLIT** Ab A° Bb **ALL** Cm 8° Eb/Bb Bb7

LU - JAH SIS - TER HELP TO TRIM THE SAIL, HAL - LE - LU - JA!

Eb **GIRLS SPLIT** Eb Ab Eb Ab Bb9

MI - CHAEL ROW THE BOAT A - SHORE HAL - LE - LU -

MEN

HE'S GOT THE WHOLE WORLD IN HIS HANDS HE'S GOT THE WHOLE WIDE WORLD

Eb Ab A° Bb Ab/Bb Bb7

JA! MI - CHAEL ROW THE BOAT A - SHORE, HAL - LE -

IN HIS HANDS HE'S GOT THE WHOLE WORLD IN HIS HANDS HE'S GOT THE

Eb/Bb Bb7 Eb Bb7 Eb

LU - - JA! HE'S GOT THE WHOLE WORLD IN HIS HANDS!

WHOLE WROLD IN HIS HANDS HE'S GOT THE WHOLE WORLD IN HIS HANDS!

A7 **ALL** **J** D

OH WHEN THE SAINTS... GO MARCH-ING IN OH WHEN THE SAINTS GO

A7 D D7 G Gm D E7 A7 D

MARCH-ING IN I WAN-NA BE IN THAT NUM-BER WHEN THE SAINTS GO MARCH-ING IN

D A7 7

AND WHEN THE SUN BE-GINS TO SHINE AND WHEN THE SUN BE - GINS TO SHINE

D D7 G Gm D E7 A7 D

I WAN-NA BE IN THAT NUM-BER WHEN THE SAINTS GO MARCH-ING IN

Bb7 K Eb GIRLS SPLIT

YES WHEN THE SAINTS GO MARCH-ING IN

MEN

OH WHEN THE SAINTS... GO MARCH-ING IN OH WHEN THE

Bb7 Eb Eb7 Ab

OH WHEN THE SAINTS GO MARCH-ING IN. GO MARCH-ING IN. BE IN THAT NUM-BER

SAINTS GO MARCH - ING IN I WAN-NA BE IN THAT NUM-BER

Abm Eb F7 Bb7 Eb Eb B7/A Ab

WHEN THE SAINTS GO MARCH-ING IN WHEN THE SAINTS GO MAR

WHEN THE SAINTS GO MARCH-ING IN WHEN THE SAINTS GO MAR

Bb7 Eb

CHING IN SAINTS GO MARCH-ING IN

CHING IN SAINTS GO MARCH-ING IN